



**TEST REPORT**

NUMBER: SZHH00277376

APPLICANT: TOP-VIEW COILS PRODUCTS CO., LTD  
FLAT C, 21/ FLOOR GLEE INDUSTRIAL  
BUILDING , 77-81 CHAI WAN KOK  
STREET , TSUEN WAN , N.T.H.K

DATE: Jul 21, 2008

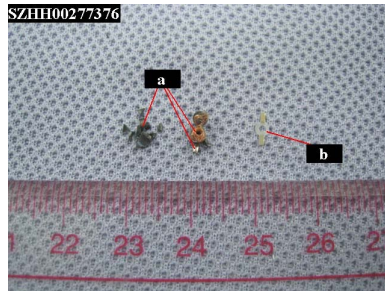
ATTN: LI WEN JUN

**SAMPLE DESCRIPTION:**

ONE (1) SUBMITTED SAMPLE SAID TO BE **SM / MC / SD / SB COILS.**

**TESTED COMPONENTS:**

- (a) GREY MAGNET & COPPER COLOR ENAMELED WIRE & SILVER COLOR METAL & WHITE PLASTIC & SOLDER.
- (b) WHITE PLASTIC.



\*\*\*\*\*

**TESTS CONDUCTED:**

AS REQUESTED BY THE APPLICANT, FOR DETAILS REFER TO ATTACHED PAGE(S)

\*\*\*\*\*

**REMARK:** AS REQUESTED BY THE APPLICANT, DIFFERENT MATERIALS OF TESTED COMPONENT (a) WERE TESTED TOGETHER.

\*\*\*\*\*

AUTHORIZED BY:  
FOR INTERTEK TESTING SERVICES  
SHENZHEN LTD.

BEN N.L. LIN  
GENERAL MANAGER



**TEST REPORT**

NUMBER: SZHH00277376

TESTS CONDUCTED

(A) TEST RESULT SUMMARY:

TESTING ITEM	RESULT	
	(a)	(b)
CADMIUM (Cd) CONTENT (mg/kg)	ND (<2)	ND (<2)
LEAD (Pb) CONTENT (mg/kg)	99	ND (<2)
MERCURY (Hg) CONTENT (mg/kg)	ND (<2)	ND (<2)
CHROMIUM (VI) (Cr <sup>6+</sup> ) CONTENT (mg/kg) (FOR NON-METAL)	ND (<1)	ND (<1)
POLYBROMINATED BIPHENYLS (PBBs) (mg/kg)		
MONOBROMOBIPHENYL (MonoBB)	--	ND (<5)
DIBROMOBIPHENYL (DiBB)	--	ND (<5)
TRIBROMOBIPHENYL (TriBB)	--	ND (<5)
TETRABROMOBIPHENYL (TetraBB)	--	ND (<5)
PENTABROMOBIPHENYL (PentaBB)	--	ND (<5)
HEXABROMOBIPHENYL (HexaBB)	--	ND (<5)
HEPTABROMOBIPHENYL (HeptaBB)	--	ND (<5)
OCTABROMOBIPHENYL (OctaBB)	--	ND (<5)
NONABROMOBIPHENYL (NonaBB)	--	ND (<5)
DECABROMOBIPHENYL (DecaBB)	--	ND (<5)
POLYBROMINATED DIPHENYL ETHERS (PBDEs) (mg/kg)		
MONOBROMODIPHENYL ETHER (MonoBDE)	--	ND (<5)
DIBROMODIPHENYL ETHER (DiBDE)	--	ND (<5)
TRIBROMODIPHENYL ETHER (TriBDE)	--	ND (<5)
TETRABROMODIPHENYL ETHER (TetraBDE)	--	ND (<5)
PENTABROMODIPHENYL ETHER (PentaBDE)	--	ND (<5)
HEXABROMODIPHENYL ETHER (HexaBDE)	--	ND (<5)
HEPTABROMODIPHENYL ETHER (HeptaBDE)	--	ND (<5)
OCTABROMODIPHENYL ETHER (OctaBDE)	--	ND (<5)
NONABROMODIPHENYL ETHER (NonaBDE)	--	ND (<5)
DECABROMODIPHENYL ETHER (DecaBDE)	--	ND (<5)

CHEMIST: LV LINNA

mg/kg = MILLIGRAM PER KILOGRAM = ppm

< = LESS THAN

ND = NOT DETECTED

NOTE: THE EUROPEAN COURT OF JUSTICE (ECJ) HAS RULED THAT FLAME RETARDANT DECABROMODIPHENYL ETHER (DecaBDE) WILL BE "BANNED" FROM ELECTRICAL AND ELECTRONIC EQUIPMENT FROM JULY 01, 2008.

\*\*\*\*\*

(B) RoHS REQUIREMENT:



**TEST REPORT**

NUMBER: SZHH00277376

TESTS CONDUCTED

RESTRICTED SUBSTANCES	LIMITS
CADMIUM (Cd)	0.01% (100 ppm)
LEAD (Pb)	0.1% (1000 ppm)
MERCURY (Hg)	0.1% (1000 ppm)
CHROMIUM (VI) (Cr <sup>6+</sup> )	0.1% (1000 ppm)
POLYBROMINATED BIPHENYLS (PBBs)	0.1% (1000 ppm)
POLYBROMINATED DIPHENYL ETHERS (PBDEs)	0.1% (1000 ppm)

THE ABOVE LIMITS WERE QUOTED FROM 2002/95/EC AND AMENDMENT 2005/618/EC FOR HOMOGENEOUS MATERIAL.

(C) TEST METHOD:

TESTING ITEM	TESTING METHOD	REPORTING LIMIT
CADMIUM (Cd) CONTENT	WITH REFERENCE TO IEC 62321 - 111/95/CDV, BY ACID DIGESTION AND DETERMINED BY ICP - OES	2 mg/kg
LEAD (Pb) CONTENT	WITH REFERENCE TO IEC 62321 - 111/95/CDV, BY ACID DIGESTION AND DETERMINED BY ICP - OES	2 mg/kg
MERCURY (Hg) CONTENT	WITH REFERENCE TO IEC 62321 - 111/95/CDV, BY ACID DIGESTION AND DETERMINED BY ICP - OES	2 mg/kg
CHROMIUM (VI) (Cr <sup>6+</sup> ) CONTENT (FOR NON-METAL)	WITH REFERENCE TO IEC 62321 - 111/95/CDV, BY ALKALINE DIGESTION AND DETERMINED BY UV-VIS SPECTROPHOTOMETER	1 mg/kg
POLYBROMINATED BIPHENYLS (PBBs) & POLYBROMINATED DIPHENYL ETHERS (PBDEs)	WITH REFERENCE TO IEC 62321 - 111/95/CDV, BY SOLVENT EXTRACTION AND DETERMINED BY GC/MS AND FURTHER HPLC CONFIRMATION WHEN NECESSARY	5 mg/kg

NOTE: TESTS WERE CONDUCTED WITH REFERENCE TO 111/95/CDV VERSION 2007-10-12 WHICH IS STILL A DRAFT METHOD AND SUBJECT TO FUTURE CHANGES PRIOR TO PUBLICATION.

DATE SAMPLE RECEIVED : JUL 15, 2008  
TESTING PERIOD : JUL 15, 2008 TO JUL 19, 2008

\*\*\*\*\*



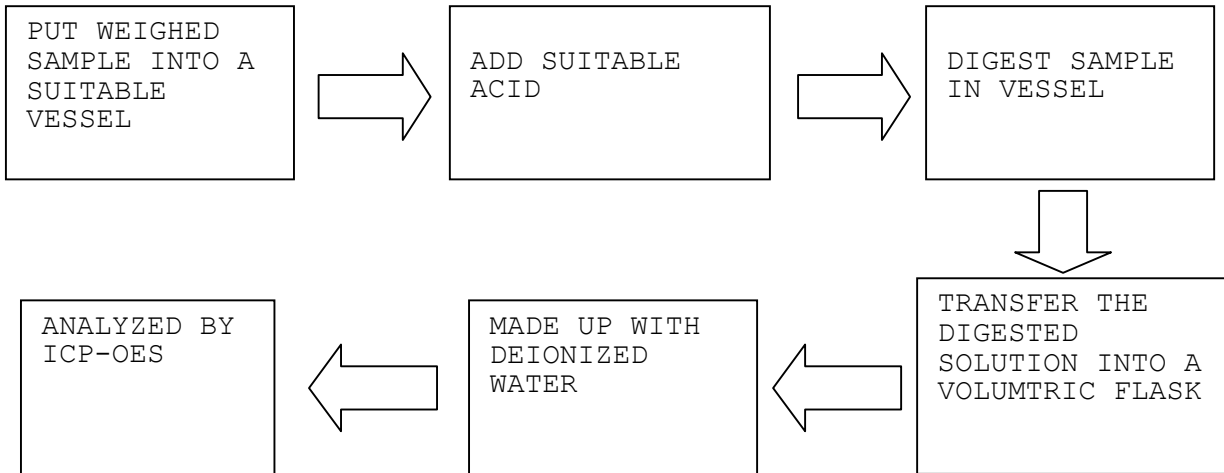
**TEST REPORT**

NUMBER: SZHH00277376

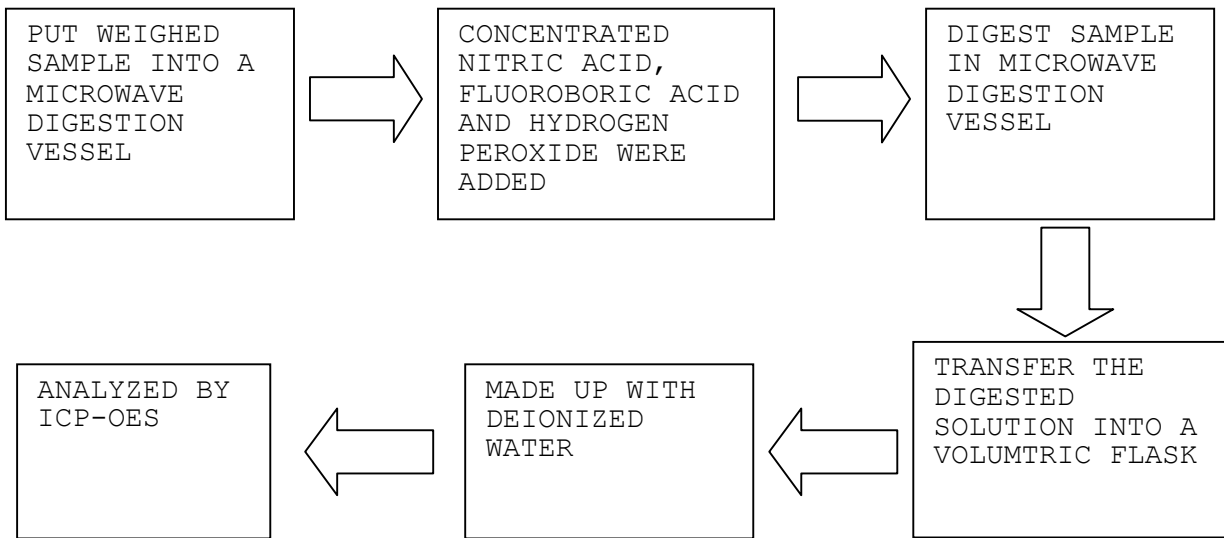
TESTS CONDUCTED

(D) MEASUREMENT FLOWCHART:

1. TEST FOR Cd/Pb CONTENTS



2. TEST FOR Hg CONTENT



\*\*\*\*\*

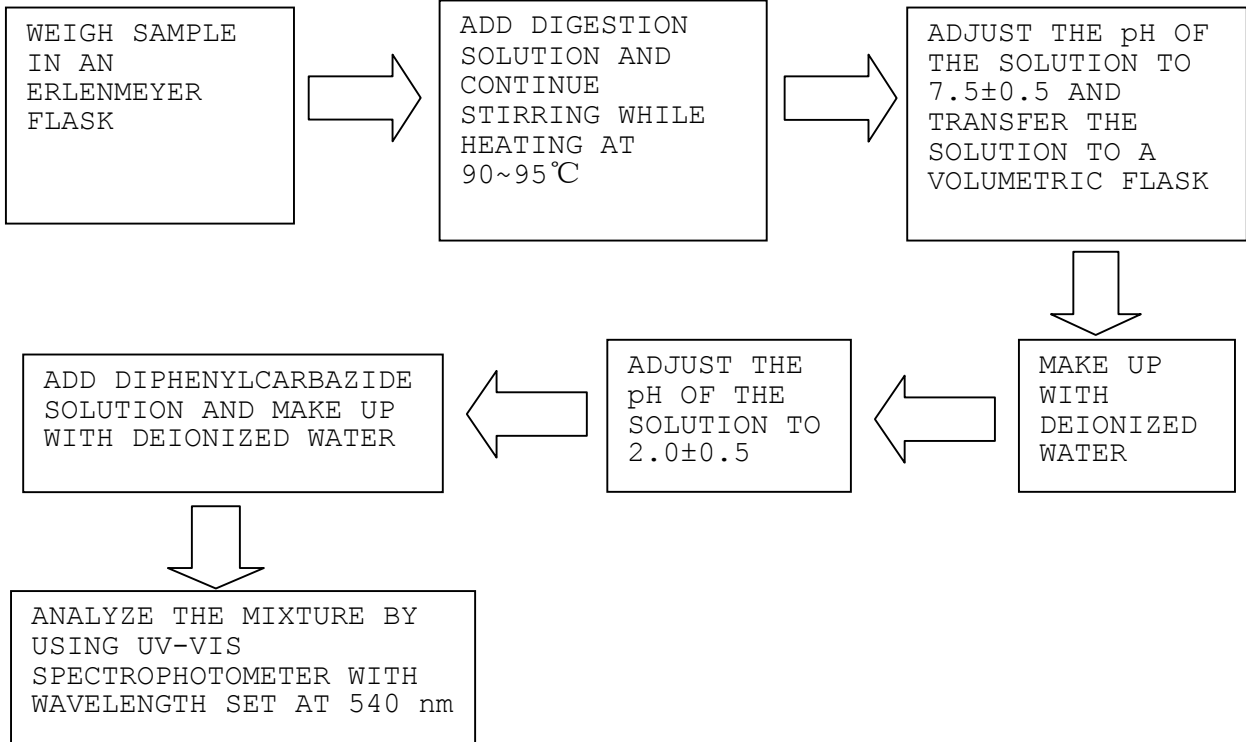


**TEST REPORT**

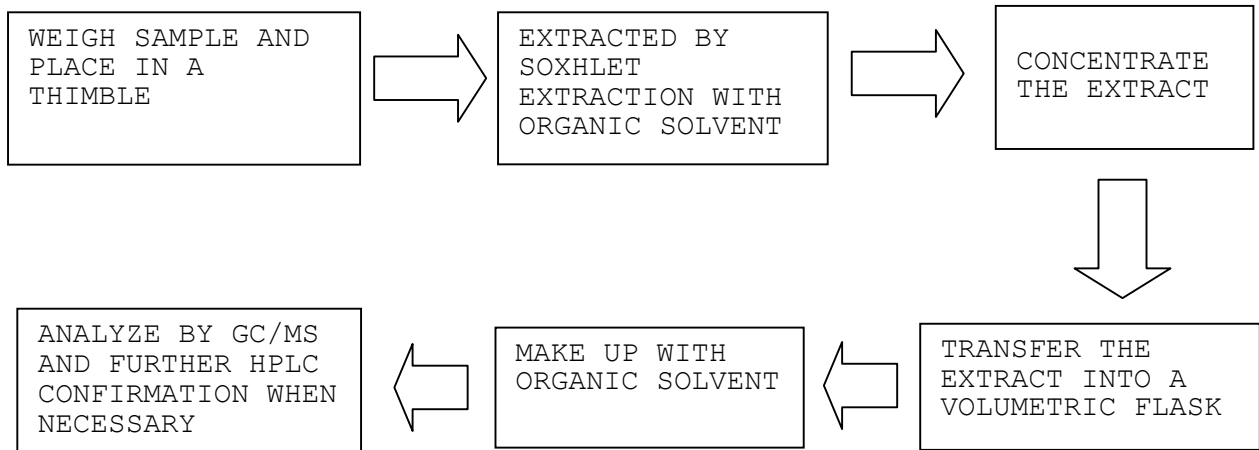
NUMBER: SZHH00277376

TESTS CONDUCTED

3. TEST FOR CHROMIUM (VI) (Cr<sup>6+</sup>) CONTENT (ALKALINE DIGESTION)



4. TEST FOR PBBs/PBDEs CONTENTS



\*\*\*\*\*

END OF REPORT